



## GET IN TOUCH...

To request a quote or place an order please contact a member of our friendly team via email:

[mail@allprintjersey.co.uk](mailto:mail@allprintjersey.co.uk)

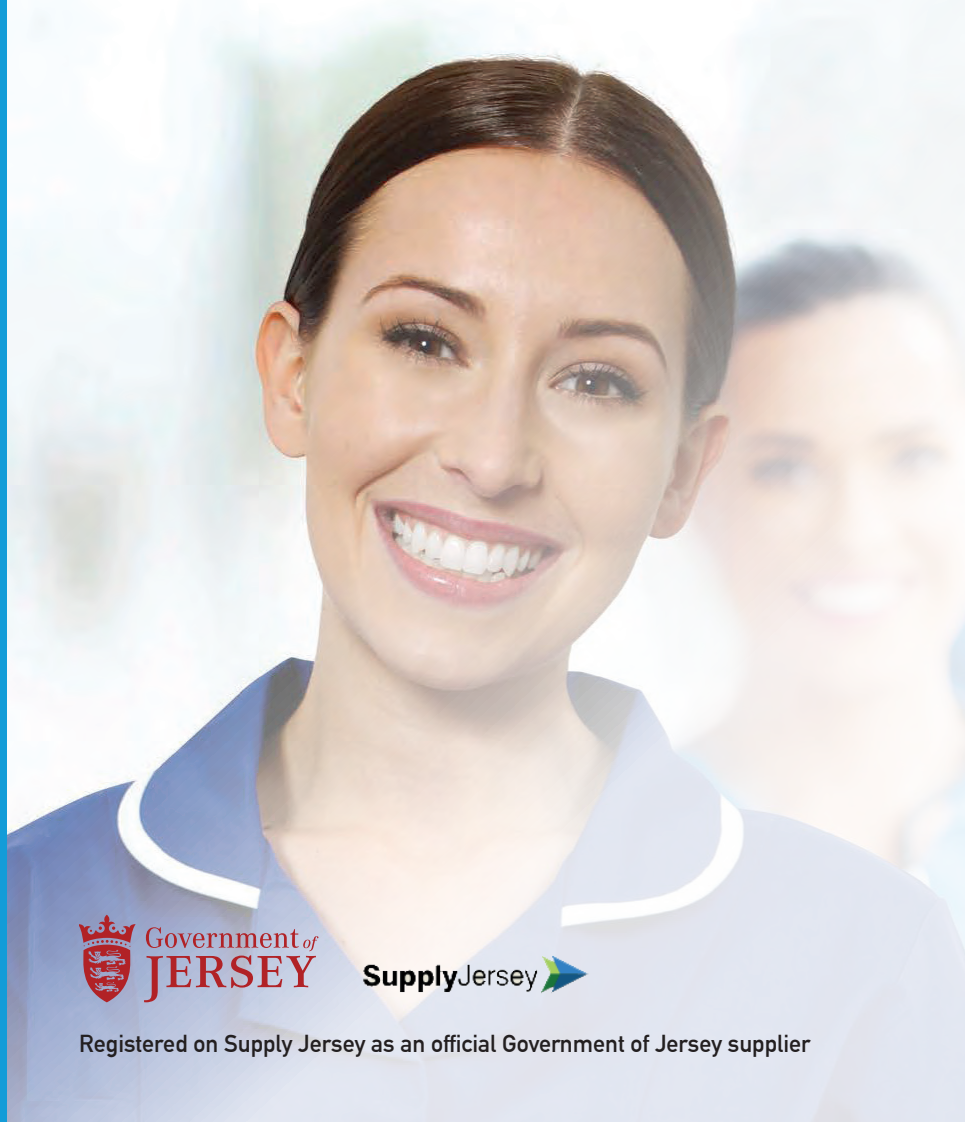
or via Facebook [@allprintjersey](#)



E: [mail@allprintjersey.co.uk](mailto:mail@allprintjersey.co.uk)



Find us on facebook



Government of  
**JERSEY**

**Supply** Jersey 

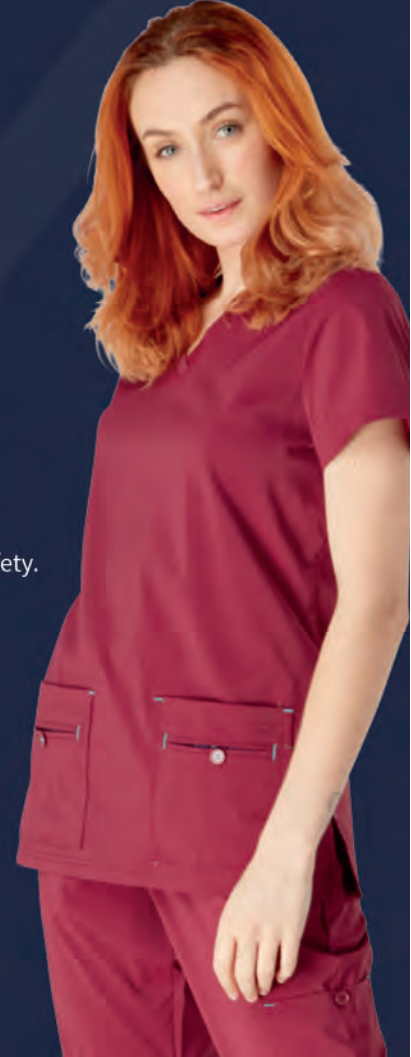
Registered on Supply Jersey as an official Government of Jersey supplier



QUALITY, STYLE & COMFORT

## More than a uniform.

The treated range features garments made from recycled polyester/spandex with BI-OME® Technology for increased safety.





## BI-OME AM5 AV<sup>®</sup> Antimicrobial Technology

Devan BI-OME AM5 AV<sup>®</sup> is a finishing technology that prevents microbial growth and reduces the viral activity of enveloped viruses, including SARS-CoV-2\*.





## Ladies Scrubs

### Siena Ladies Treated Scrub Top

Available in the below colours



V Neck with Moda Per Cura  
print design facing neck

A modern ladies scrub top made from recycled polyester, each garment contains the equivalent to 25 plastic bottles from the sea, also featured are two hip pockets, side vents and contrast bar tack detail on all stress points. These scrubs are treated with BI-OME AM5 AV®, which is a finishing technology that prevents microbial growth and reduces the viral activity of enveloped viruses, including SARS-CoV-2\*.



## GARMENT INFORMATION



# Product Details & Fit.

- ✓ Sizes - XS - 3XL
- ✓ V Neck with Moda Per Cura print design facing in neck opening.
- ✓ Two hip pockets with additional inset pockets with contrast button and Moda Per Cura loop fastening and Moda Per Cura print design lining.
- ✓ ID loop on right shoulder.
- ✓ Side vents at hemline.
- ✓ Contrast bar tack detail on all stress points.
- ✓ Each garment contains the equivalent to 25 plastic bottles removed from the sea.
- ✓ Length approx. 29"/74cm.
- ✓ Fabric: 95% Recycled Polyester / 5% Spandex. 100% Fashion For Care.
- ✓ Treated with BI-OME AM5 AV® Antimicrobial Technology.
- ✓ Weight: 145gsm.
- ✓ Care Information: Wash to 60 degrees.





## Mens Scrubs

### Imola Men's Treated Scrub Top

Available in the below colours



V Neck with Moda Per Cura print design facing in neck opening.

A modern mens scrub top made from recycled polyester and treated with BI-OME AM5 AV®, that prevents microbial growth and reduces the viral activity of enveloped viruses, also featured are two multi compartment hip pockets, side vents, and twin needle stitching for added strength.

## GARMENT INFORMATION



# Product Details & Fit.

- ✓ Sizes - XS - 3XL
- ✓ V Neck with Moda Per Cura print design facing in neck opening.
- ✓ Polo shirt style breast pocket with Moda Per Cura print design lining and contrast button fastening.
- ✓ Two multi compartment hip pockets with Moda Per Cura print feature design and contrast mock button fastening.
- ✓ Side vents at hemline.
- ✓ Twin needle stitching for added strength.
- ✓ Contrast bar tack detail on all stress points.
- ✓ Length approx. 29"/74cm.
- ✓ Fabric: 95% Recycled Polyester / 5% Spandex. Comfy stretch fabric. 100% Fashion For Care.
- ✓ Treated with BI-OME AM5 AV® Antimicrobial Technology.
- ✓ Each garment contains the equivalent to 25 plastic bottles removed from the sea.
- ✓ Weight: 145gsm.
- ✓ Care Information: Wash to 60 degrees.





## Unisex Scrubs

### Amalfi Unisex Scrub Top

Available in the below colours



V Neck with Moda Per Cura print design facing in neck opening.

A unisex scrub top that features a crossover neckline, multiple pockets including zipped pockets with waterproof lining for protection, action back for ease of movement and side vents at the hemline. This scrub top comes in 7 colours and pairs with the Genoa Unisex Trousers.



## GARMENT INFORMATION



# Product Details & Fit.

- ✓ Sizes - XS - 3XL
- ✓ Crossover neckline.
- ✓ Moda Per Cura print design facing in neck opening.
- ✓ Inset breast pocket with waterproof lining.
- ✓ Two hip pockets with concealed zip fastening and waterproof lining.
- ✓ Concealed mobile phone pocket in Moda Per Cura print design inside right hip pocket.
- ✓ Action back for ease of movement.
- ✓ Contrast bar tack detail on all stress points.
- ✓ Side vents at hemline.
- ✓ Length approx. 29"/74cm.
- ✓ Fabric: 65% Polyester / 35% Cotton. 100% Fashion For Care.
- ✓ Weight: 195gsm.
- ✓ Care Information: Wash to 65 degrees.





## Unisex Scrubs

### Como Ladies Treated Scrub Trousers

Available in the below colours



Available in leg lengths:  
Short/29" & Regular/31".

This treated ladies trouser is made from recycled polyester, each garment contains the equivalent to 25 plastic bottles removed from the sea. Also featured is an ultra-soft elastic rib waistband, various pockets including two side pockets and cargo pockets on legs. This trouser is treated with BI-OME AMS AV® is a finishing technology that prevents microbial growth and reduces the viral activity of enveloped viruses, including SARS-CoV-2\*.

## Product Details & Fit.



- ✓ Sizes - XS - 3XL
- ✓ Available in three leg lengths: Petite/29", Regular/31", Tall/33".
- ✓ Ultra-Soft Elastic rib waistband.
- ✓ Two side pockets with Moda Per Cura print detail to inside edge.
- ✓ Handy small pocket inside right side pocket.
- ✓ Two cargo pockets on legs with contrast button fastening.
- ✓ Two rear pockets.
- ✓ Split side feature with Moda Per Cura print design to inside edge at hem.
- ✓ Contrast bar tack detail on all stress points.
- ✓ Each garment contains the equivalent to 25 plastic bottles removed from the sea.
- ✓ Each garment contains the equivalent to 25 plastic bottles removed from the sea.
- ✓ Fabric: 95% Recycled Polyester / 5% Spandex. 100% Fashion For Care.
- ✓ Treated with BI-OME AM5 AV® Antimicrobial Technology.
- ✓ Weight: 145gsm.
- ✓ Care Information: Wash to 60 degrees.





## Unisex Scrubs

### Monza Men's Treated Scrub Trousers

Available in the below colours



Available in leg lengths:  
Regular/31" & Tall/33"

This treated mens trouser is made from recycled polyester, each garment contains the equivalent to 25 plastic bottles removed from the sea. Also featured is an elasticated waist with contrast press stud fastening and internal drawcord, various pockets including a mobile phone and two zip fastening pockets, and twin needle stitching for added strength. The Monza trouser has been made to compliment the Imola scrub top.



## Product Details & Fit.



- ✓ Sizes - XS - 3XL
- ✓ Available in leg lengths: Regular/31", Tall/33".
- ✓ Elasticated waist with contrast press stud fastening and internal drawcord.
- ✓ Contrast concealed zip fly.
- ✓ Two side pockets with Moda Per Cura print detail to inside edge.
- ✓ Cargo pocket on left leg with contrast button fastening.
- ✓ Mobile phone pocket on left leg with contrast button fastening.
- ✓ Two rear pockets both with additional concealed zip fastening pockets.
- ✓ Twin needle stitching for added strength.
- ✓ Contrast bar tack detail on all stress points.
- ✓ Fabric: 95% Recycled Polyester / 5% Spandex. Comfy stretch fabric. 100% Fashion For Care.
- ✓ Treated with BI-OME AM5 AV® Antimicrobial Technology.
- ✓ Each garment contains the equivalent to 25 plastic bottles removed from the sea.
- ✓ Weight: 145gsm.
- ✓ Care Information: Wash to 60 degrees.





## Unisex Scrubs

### Genoa Unisex Scrub Trousers - Caribbean

Available in the below colours



Available in leg lengths:  
Short/29" & Regular/31".

A modern unisex trouser that features a fully elasticated waistband with drawstring, two side pockets, and a zipped rear pocket, and contrasting bar tack detail on all stress points, this scrub trouser is available in 7 colours and pairs with the Amalfi Unisex Scrub Top.



## GARMENT INFORMATION

# Product Details & Fit.

- ✓ Sizes - XS - 3XL
- ✓ Available in leg lengths: Short/29", Regular/31".
- ✓ Fully elasticated waistband with added drawstring.
- ✓ Two side pockets with Moda Per Cura print detail to inside edge.
- ✓ Rear pocket with hidden concealed zip pocket for mobile phone.
- ✓ Contrast bar tack detail on all stress points.
- ✓ Fabric: 65% Polyester / 35% Cotton. 100% Fashion For Care.
- ✓ Weight: 195gsm.
- ✓ Care Information: Wash to 65 degrees.



# SIZING CHARTS

## LADIES

### SCRUB TOP & TROUSER

SIZE	XSM	SML	MED	LGE	XLG	2XL	3XL
BUST SIZE INCHES	28-30	32-34	36-38	40-42	44-46	48-50	52-54
WAST SIZE INCHES	22-24	28-28	30-32	34-36	38-40	42-44	48-48
DRESS SIZE	UK 04-06	UK 08-10	UK 12-14	UK 16-18	UK 20-24	UK 24-26	UK 28-30
INSIDE LEG PETITE	29"	29"	29"	29"	29"	29"	29"
INSIDE LEG REG	31"	31"	31"	31"	31"	31"	31"
INSIDE LEG TALL	33"	33"	33"	33"	33"	33"	33"

## MENS

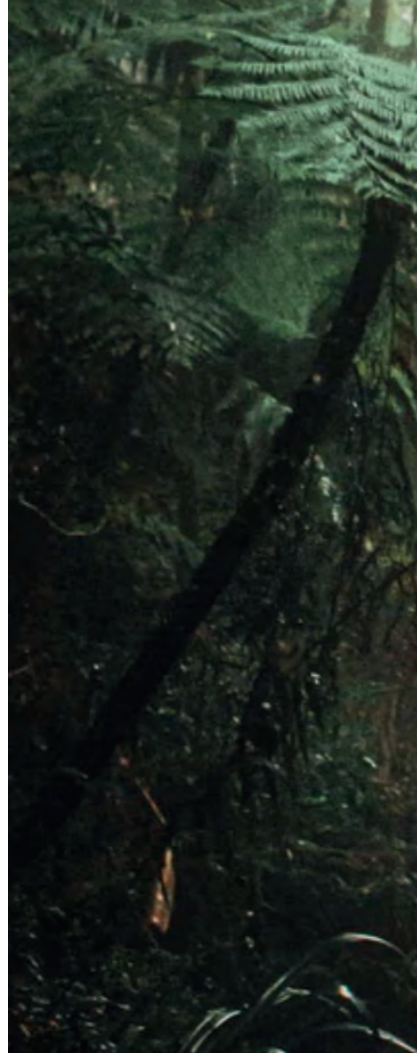
### SCRUB TOP & TROUSER

SIZE	XSM	SML	MED	LGE	XLG	2XL	3XL
CHEST SIZE INCHES	30-32	34-36	38-40	42-44	48-48	50-52	54-56
WAST SIZE INCHES	28-28	28-30	32-34	36-38	40-42	44-46	48-50
INSIDE LEG REG	31"	31"	31"	31"	31"	31"	31"
INSIDE LEG TALL	33"	33"	33"	33"	33"	33"	33"


## UNISEX

### SCRUB TOP & TROUSER

SIZE	XSM	SML	MED	LGE	XLG	2XL	3XL
BUST SIZE INCHES	30-32	34-36	38-40	42-44	46-48	50-52	54-56
WAST SIZE INCHES	22-24	26-28	30-32	34-36	38-40	42-44	46-48
DRESS SIZE	UK 04-06	UK 08-10	UK 12-14	UK 16-18	UK 20-22	UK 24-26	UK 28-30
INSIDE LEG SHORT	29"	29"	29"	29"	29"	29"	29"
INSIDE LEG REG	31"	31"	31"	31"	31"	31"	31"







WHENEVER YOU ORDER

## A tree is planted

We are proud partners of Moretrees. For every order you place with Moda Per Cura, one tree will be planted on your behalf. By planting trees, this helps reduce the worlds CO2 emissions, aids water filtration and helps food sources. For more information.

# BI-OME AM5 AV® TEXTILE ANTIMICROBIAL TREATMENT TECHNOLOGY

Devan BI-OME AM5 AV® is a finishing technology that prevents microbial growth and reduces the viral activity of enveloped viruses, including SARS-CoV-2\*.

\* Tested according to ISO18184.



## So what does Devan BI-OME AM5 AV® do ?

- Eliminates different types of microorganisms (bacteria).
- Reduces possible malodour and bacterial build up.
- Wash-durable.
- 99% reduction in microorganisms\*
- 97% reduction in viral activity after 2 hours of contact with Enveloped Viruses\*.
- Metal-free solution (no silver).

\*acc to ASTM E-2149

\*Test method NFISO 1814

## Is Devan BI-OME AM5 AV® registered ?

- BRP-EU and TK registered.
- EPA registered product.

## Protection

Devan BI-OME AM5 AV® protects the product, not the person. The treatment keeps the fabric hygienic by reducing bacteria and virus growth on the surface. Through the reduction in bacteria, the treatment also prevents unwanted smells developing on the fabric.



## Is Devan BI-OME AM5 AV® eco-friendly ?

- Yes it is Inherent Biodegradable. (OECD 209/302B)
- Has no negative effect on waste treatment.
- Is Non-toxic to waste water.
- Is a Metal-free solution (no silver).

## Can Devan BI-OME AM5 AV® be used next-to-skin?

Yes, it does not affect the skin as it doesn't interfere with the skin's natural bacterial flora.

## How is it applied?

Normally, it is applied to the fabric at the finishing stage of production.







# practical clothing made to perfection

## Ladies Healthcare Tunic

Female Tunic, princess seams, round collar, two breast pockets with a waterproof lining in the left pocket, two lower hip pockets with a key loop in the right pocket, concealed open ended zip fastening with top stud, action back and vents for ease of movement. Trim to the collar, sleeves and lower pockets.

**Sizes:** 6 - 30, Back length 74-77cm

**Material:** 195gsm 65% Polyester 35% Cotton

Suitable for industrial laundry.  
Infection control compliant.







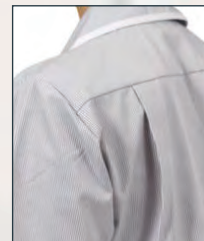
**White/Plain  
Epp Loops**  
NCLTPSE/W



**White/Eau de Nil Trim**  
NCLTPS/WEDNT



**White/Yellow Trim**  
NCLTPS/WYT



**Action Back - for  
easy movement and  
comfortable fit.**

Go to the next  
page for more  
colours...



**Need  
Epaulettes?**

See page 40



**White/Sky Trim**  
NCLTPS/WST



**Eau de Nil/White Trim**  
NCLTPS/EDNWT



**Bottle Green/White Trim**  
NCLTPS/BGWT



**Navy/Red Trim**  
NCLTPS/NRT



**Sky/White Trim**  
NCLTPS/SWT



**Sky/Sky Trim**  
NCLTPS/SST



**Metro/White Trim**  
NCLTPS/MBWT



**Hospital/White Trim**  
NCLTPS/HBWT



**Royal/White Trim**  
NCLTPS/RWT



**Navy/White Trim**  
NCLTPS/NWT



**Navy/Hospital Trim**  
NCLTPS/NHBT



**Teal/White Trim**  
NCLTPS/TWT



**Lilac/White Trim**  
NCLTPS/LWT



**Purple/White Trim**  
NCLTPS/PWT



**Maroon/White Trim**  
NCLTPS/MWT



**Grey/White Trim**  
NCLTPS/GWT

Go to the next page for more colours...

**Size Guide**  
See page 68





**Aqua White Stripe/White Trim**  
NCLTPS/GWSWT



**Navy White Stripe/White Trim**  
NCLTPS/NWSWT



**Blue White Stripe/White Trim**  
NCLTPS/BWSWT



**Lilac White Stripe/White Trim**  
NCLTPS/LWSWT



**Pink White Stripe/White Trim**  
NCLTPS/PWSWT



**Grey White Stripe/White Trim**  
NCLTPS/GRWSWT





## MADE TO ORDER

Here are a selection of our Made to Order garments. Should you require it we can work with you to create a bespoke garment that is tailored to your requirements and needs.



**White/Navy Trim**  
NCLTPS/WNT



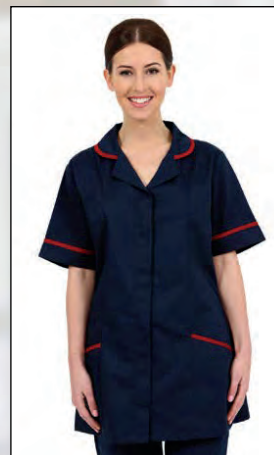
**White/Bottle Trim**  
NCLTPS/WBGT



**White/Maroon Trim**  
NCLTPS/WMT



**Grey/Navy Trim**  
NCLTPS/GNT



**Navy/Maroon Trim**  
NCLTPS/NMT



**Red/Navy Trim**  
NCLTPS/RNT



reassuringly  
authentic...

# Allied Health Professionals

## Ladies Healthcare Tunic

Female Tunic, princess seams, reverse collar, two breast pockets with a waterproof lining in the left pocket, two lower hip pockets with a key loop in the right pocket, concealed open ended zip fastening with top stud, action back and vents for ease of movement. Trim to the collar, sleeves and lower pockets.

<b>White/Bottle Green Trim</b>	NCLTPSR/WBGT
<b>White/Maroon Trim</b>	NCLTPSR/WMT
<b>White/Navy Trim</b>	NCLTPSR/WNT

**Sizes:** 6 - 26, Back length 74-77cm

**Material:** 195gsm 65% Polyester 35% Cotton

Suitable for industrial laundry.  
Infection control compliant.





stylish,  
comfortable  
& practical

## Ladies Classic Healthcare Tunic

Female Tunic, round collar, one left breast pocket with a waterproof lining in the left pocket, two lower hip pockets, concealed open ended zip fastening with a top stud, action back with vents for ease of movement. 'V' in sleeve. Trim to the collar, sleeves and pockets.

**Sizes:** 6 - 30, Back length 74-77cm

**Material:** 195gsm 65% Polyester 35% Cotton

Suitable for industrial laundry.

Infection control compliant.







**White/White Trim**  
NCLT/WWT



**White/Navy Trim**  
NCLT/WNT



**White/Maroon Trim**  
NCLT/WMT



**Eau de Nil/White Trim**  
NCLT/EDNWT



**Bottle Green/White Trim**  
NCLT/BWT



**Lilac/White Trim**  
NCLT/LWT

Go to the next page for more colours...

## Ladies Classic Healthcare Tunic



**Purple/Lilac Trim**  
NCLT/PLT



**Maroon/White Trim**  
NCLT/MWT



**Sky/White Trim**  
NCLT/SWT



**Hospital/White Trim**  
NCLT/HBWT



**Royal Blue/White Trim**  
NCLT/RWT



**Navy/White Trim**  
NCLT/NWT

**Size Guide**  
See page 68



together  
we are  
a team...

To request a quote please email: [mail@allprintjersey.co.uk](mailto:mail@allprintjersey.co.uk) or find us on Facebook @allprintjersey





# practical clothing made to perfection...

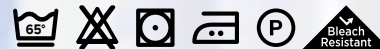
## Ladies Asymmetrical Healthcare Tunic

Female tunic, one left breast pocket with waterproof lining, two lower hip pockets, concealed open ended zip fastening with top stud, action back with vents for ease of movement. Trim to neckline, breast pocket, sleeves and lower pockets.

**Sizes:** 6 - 30, Back length 74-77cm

**Material:** 195gsm 65% Polyester 35% Cotton

Suitable for industrial laundry.  
Infection control compliant.







**White/Navy Trim**  
NALT/WNT



**Royal/White Trim**  
NALT/RWT



**Lilac/Navy Trim**  
NALT/LNT



**Sky/White Trim**  
NALT/SWT



**Sky/Navy Trim**  
NALT/SNT



**Navy/White Trim**  
NALT/NWT

# classic heritage contemporary style...

## Ladies Healthcare Dress

Female Dress princess seams, round collar, two breast pockets with a waterproof lining in the left pocket, two lower pockets with a key loop in the right pocket, concealed zip fastening with top stud, action back with front and back kick pleats for ease of movement. Trim to the collar, sleeves and lower pockets.



Action Back

**Sizes:** 6 - 30

Hemmed length - Petite 100cm, Regular 106cm, Tall 112cm

**Material:** 195gsm 65% Polyester 35% Cotton

Suitable for industrial laundry.

Infection control compliant.



Bleach  
Resistant

Go to the next page for more colours...



**White/Plain -  
Epp Loops**  
NCLDE/W



**White/Yellow Trim**  
NCLD/WYT



**White/Eau de Nil Trim**  
NCLD/WEDNT



**White/Sky Trim**  
NCLD/WST



**Eau de Nil/White Trim**  
NCLD/EDNWT



**Teal/White Trim**  
NCLD/TWT



**Lilac/White Trim**  
NCLD/LWT



**Purple/White Trim**  
NCLD/PWT



**Grey/White Trim**  
NCLD/GWT



# Ladies Healthcare Dress



**Sky/White Trim**  
NCLD/SWT



**Sky/Sky Trim**  
NCLD/SST



**Metro/White Trim**  
NCLD/MBWT



**Hospital/White Trim**  
NCLD/HBWT



**Royal/White Trim**  
NCLD/RWT



**Navy/White Trim**  
NCLD/NWT



**Navy/Hospital Trim**  
NCLD/NHBT



**Navy/Red Trim**  
NCLD/NRT

**Size Guide**  
See page 68



Go to the next page for more colours...



**Aqua White Stripe/White Trim**  
NCLD/GWSWT



**Navy White Stripe/White Trim**  
NCLD/NWSWT



**Blue White Stripe/White Trim**  
NCLD/BWSWT



**Lilac White Stripe/White Trim**  
NCLD/LWSWT



**Pink White Stripe/White Trim**  
NCLD/PWSWT



**Grey White Stripe/White Trim**  
NCLD/GRWSWT



## MADE TO ORDER

Here are a selection of our Made to Order garments. Should you require it we can work with you to create a bespoke garment that is tailored to your requirements and needs.



**White/Bottle Green Trim**  
NCLD/WBGT



**White/Maroon Trim**  
NCLD/WMT



**White/Navy Trim**  
NCLD/WNT



**Red/Navy Trim**  
NCLD/RNT



**Grey/Navy Trim**  
NCLD/GNT



**Bottle Green/White Trim**  
NCLD/BGWT



**Navy/Maroon Trim**  
NCLD/NMT



## Ladies Healthcare Dress - Revere Collar

Female Dress princess seams, reverse collar, two breast pockets with a waterproof lining in the left pocket, two lower pockets with a key loop in the right pocket, concealed zip fastening with top stud, action back with front and back kick pleats for ease of movement. Trim to the collar, sleeves and lower pockets.



**White/Bottle Green Trim**

NCLDR/WBGT

**White/Maroon Trim**

NCLDR/WMT

**White/Navy Trim**

NCLDR/WNT

**Sizes:** 6 - 30, Hemmed length - Petite 100cm, Regular 106cm, Tall 112cm

**Material:** 195gsm 65% Polyester 35% Cotton

Suitable for industrial laundry.  
Infection control compliant.





# stylish, epaulettes...

## Universal Epaulettes

Keep things simple by adding epaulettes for easy means of identifying distinct roles within your workplace.



### List of colours and codes...

<b>White</b>	NE/W
<b>Yellow</b>	NE/Y
<b>Grey</b>	NE/G
<b>Eau de Nil</b>	NE/EDN
<b>Bottle Green</b>	NE/BG
<b>Sky</b>	NE/S
<b>Metro Blue</b>	NE/MB
<b>Hospital Blue</b>	NE/HB
<b>Royal Blue</b>	NE/R
<b>Navy</b>	NE/N
<b>Lilac</b>	NE/L
<b>Purple</b>	NE/P
<b>Maroon</b>	NE/M
<b>Red</b>	NE/RD
<b>Black</b>	NE/B
<b>Hospital Blue</b>	NE/HB
<b>Teal</b>	NE/T

<b>Grey/White Stripe</b>	NE/GRWS
<b>Green/White Stripe</b>	NE/GWS
<b>Pink/White Stripe</b>	NE/PWS
<b>Lilac/White Stripe</b>	NE/LWS
<b>Blue/White Stripe</b>	NE/BWS
<b>Navy/White Stripe</b>	NE/NWS







To request a quote please email: [mail@allprintjersey.co.uk](mailto:mail@allprintjersey.co.uk) or find us on Facebook @allprintjersey

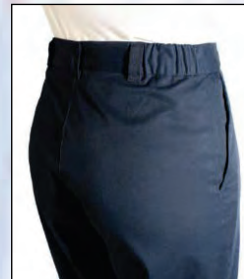
# classic heritage, contemporary style...

## Ladies Classic Trouser

Female Trouser, side elasticsation for added comfort, belt loops, two side swing pockets, zip front fastening with button closure. Available in five length's including unhemmed complete with hem-fix.

**Sizes:** 6 - 30,  
Hemmed length - Petite 27", Regular 29", Tall 31",  
Extra Tall 33", Unhemmed 35"

**Material:** 195gsm 65% Polyester 35% Cotton  
Suitable for industrial laundry.  
Infection control compliant.



### Colour Choice

**Navy**  
NLPCT/N

**Bottle Green**  
NLPCT/BG

**Black**  
NLPCT/B

**Maroon**  
NLPCT/M

**Grey**  
NLPCT/G



## Ladies Boot Cut Trouser

Female Boot Cut Trouser, contemporary cut, side elastics for added comfort, two side pockets, flat front zip fastening with button closure. Available in an unhemmed length complete with hem-fix.



### Colour Choice

**Navy**  
NLPCTB/N

**Black**  
NLPCTB/B



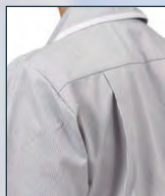


# we understand what you need...



## Ladies Maternity Tunic

Maternity Tunic, designed with superior comfort in mind, two breast pockets, two lower pockets, zip front fastening with top stud, action back with vents. Trim to collar, sleeves and lower pockets.



Action Back

**Sizes:** 8 - 22, Back length - 77cm

**Material:** 195gsm 65% Polyester 35% Cotton

Suitable for industrial laundry.

Infection control compliant.





**White/Plain -  
Epp Loops**  
NCLTPSME/W



**Eau de Nil/White Trim**  
NCLTPSM/EDNWT



**Lilac/White Trim**  
NCLTPSM/LWT



**Sky/White Trim**  
NCLTPSM/SWT



**Metro Blue/White Trim**  
NCLTPSM/MBWT



**Hospital/White Trim**  
NCLTPSM/HBWT



**Royal/White Trim**  
NCLTPSM/RWT



**Navy/White Trim**  
NCLTPSM/NWT

Go to the next  
page for more  
colours...



## MADE TO ORDER

These are a selection of our Made to Order garments.



**Teal/White Trim**  
NCLTPSM/TWT



**Grey/White Trim**  
NCLTPSM/GWT



**Aqua White Stripe/White Trim**  
NCLTPSM/GWSWT



**Blue White Stripe/White Trim**  
NCLTPSM/BWSWT



**Grey/Navy Trim**  
NCLTPSM/GNT



**Navy/Hospital Trim**  
NCLTPSM/NHBT



**Navy/Maroon Trim**  
NCLTPSM/NMT



**Navy/Red Trim**  
NCLTPSM/NRT



**Purple/White Trim**  
NCLTPSM/PWT



# practical clothing made to perfection...

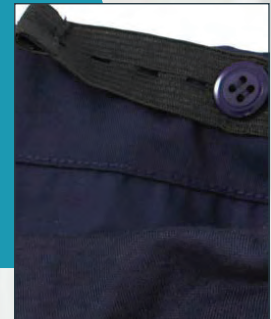
## Ladies Maternity Trouser

Maternity Trouser designed with superior comfort in mind, containing an elasticated waistband with adjustable button mechanism for added flexibility and a soft jersey front panel. Available in an unhemmed length complete with hem-fix.

**Sizes:** 6 - 26, Unhemmed 35"

**Material:** 195gsm 65% Polyester 35% Cotton

Suitable for industrial laundry.  
Infection control compliant.



### Colour Choice

**Navy**  
NLMT/N

**Black**  
NLMT/B



# excellence and professionalism...

## Men's Healthcare Tunic

Male Tunic, two breast pockets with a waterproof lining in the left pocket, two lower hip pockets with waterproof lining in the left pocket and a key loop in the right pocket, zip front fastening with top stud, mock back belt, action back and vents for ease of movement. Trim to collar and sleeves.

**Sizes:** 34" - 50", Back length 77-81cm

**Material:** 195gsm 65% Polyester 35% Cotton

Suitable for industrial laundry.

Infection control compliant.



Go to the next page for more colours...

This colour option is only available with one breast pocket.



**White/Plain - Epp Loops**  
NCMTE/W



**White/Yellow Trim**  
NCMT/WYT



**White/Eau de Nil Trim**  
NCMT/WEDNT



**White/Bottle Trim**  
NCMT/WBGT



**White/Navy Trim**  
NCMT/WNT



**White/Maroon Trim**  
NCMT/WMT



**Eau de Nil/White Trim**  
NCMT/EDNWT



**Bottle/White Trim**  
NCMT/BGWT



**Teal/White Trim**  
NCMT/TWT





**Royal/White Trim**  
NCMT/RWT



**Purple/White Trim**  
NCMT/PWT



**Maroon/White Trim**  
NCMT/MWT



**Grey/White Trim**  
NCMT/GWT



**Sky/White Trim**  
NCMT/SWT



**Sky/Sky Trim**  
NCMT/SST



**Metro/White Trim**  
NCMT/MBWT



**Hospital/White Trim**  
NCMT/HBWT



**MADE TO ORDER**

Below are a selection of our Made to Order garments.

Should you require it we can work with you to create a bespoke garment that is tailored to your requirements and needs.



**Navy/White Trim**  
NCMT/NWT



**Navy/Red Trim**  
NCMT/NRT



**Aqua White Stripe/White Trim**  
NCMT/GWSWT



**Blue White Stripe/White Trim**  
NCMT/BWSWT



**Lilac/White Trim**  
NCMT/LWT



**Grey/Navy Trim**  
NCMT/GNT



**Navy/Hospital Trim**  
NCMT/NHBT



**Navy/Purple Trim**  
NCMT/NPT



**Red/Navy Trim**  
NCMT/RNT



**Purple/White Trim**  
NCMT/PWT



reassuringly  
authentic...

## Men's Dental Healthcare Tunic

Male Dental Tunic, one left breast pocket with a waterproof lining, one lower left hip pocket, studded front side fastening, mock back belt, action back and vents for ease of movement.



**Need  
Epaulettes?**

See page 40

**Sizes:** 34" - 50", Back length - 77-81cm

**Material:** 195gsm 65% Polyester 35% Cotton

Suitable for industrial laundry.  
Infection control compliant.





## Colour Choice



**White - Epp Loops**  
NDMTE/W



**Grey** - NDMT/G



**Sky** - NDMT/S



**Metro** - NDMT/MB



**Hospital** - NDMT/HB



**Navy** - NDMT/N



**Bottle Green** - NDMT/BG



**Maroon** - NDMT/M



**Black** - NDMT/B



**Royal** - NDMT/R

To request a quote please email: [mail@allprintjersey.co.uk](mailto:mail@allprintjersey.co.uk) or find us on Facebook @allprintjersey



# textiles with heritage...

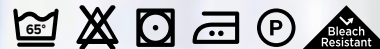
## Men's Classic Healthcare Tunic

Male Classic Tunic, mandarin collar, epaulette loops, one left sleeve pocket with waterproof lining and pen division, two lower hip pockets with internal key loop and additional bleeper pocket in the right pocket, zip front fastening with top stud, action back and vents for ease of movement.

**Sizes:** 34" - 50", Back length 77-81cm

**Material:** 195gsm 65% Polyester 35% Cotton

Suitable for industrial laundry.  
Infection control compliant.



## Colour Choice

The Men's Classic Healthcare Tunic does not come with Epaulettes, these are for photographic reference only.



**White**  
NMT/W



**Sky Blue**  
NMT/S



**Hospital Blue**  
NMT/HB



**Royal Blue**  
NMT/R



**Navy Blue**  
NMT/N



## Need Epaulettes?

For our full list of Epaulettes please go to page 28



# seamless quality and service...

## Men's Pleated Trouser

Male Trousers, sewn in front pleats, belt loops, two front side pockets, one rear pocket, zip fastening with hook and bar closure.

Available in four length's including unhemmed complete with hem fix.

**Sizes:** 30" - 50",  
Hemmed length - Short 29", Regular 31",  
Tall 33", Unhemmed 35"

**Material:** 195gsm 65% Polyester 35% Cotton

Suitable for industrial laundry.  
Infection control compliant.



### Colour Choice

**Navy**  
NMPCTP/N

**Bottle Green**  
NMPCTP/BG

**Black**  
NMPCTP/B

**Maroon**  
NMPCTP/M



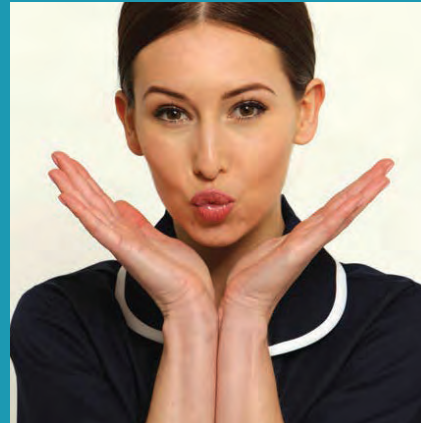
It's not all...



...work...



...work...



...work!





together  
we are  
a team...

## Unisex Smart Scrub Tunic

Unisex Smart Scrub Tunic, crossover neckline for modesty and comfort, one left breast pocket and two lower hip pockets all with waterproof lining, action back and side vents for ease of movement. Trim to neckline and sleeves.

**Sizes:** XS - 2XL, Back length 74-80cm

**Material:** 195gsm 65% Polyester 35% Cotton

Suitable for industrial laundry.  
Infection control compliant.





Go to the next page for style with trim...



**White/Plain**  
NSTP/W



**Eau de Nil/Plain**  
NSTP/EDN



**Bottle Green/Plain**  
NSTP/BG



**Maroon/Plain**  
NSTP/M



**Black/Plain**  
NSTP/B



**Sky/Plain**  
NSTP/S



**Metro Blue/Plain**  
NSTP/MB



**Hospital/Plain**  
NSTP/HB



**Navy/Plain**  
NSTP/N

# Unisex Smart Scrub Tunic



**Maroon/  
White Trim**  
NSTT/MWT



**Eau de Nil/  
White Trim**  
NSTT/EDNWT



**Bottle Green/  
White Trim**  
NSTT/BGWT




**Lilac/White Trim**  
NSTT/LWT




**Purple/White Trim**  
NSTT/PWT



**Grey/White Trim**  
NSTT/GWT



**Sky/White Trim**  
NSTT/SWT



**Royal/White Trim**  
NSTT/RWT



**Metro/White Trim**  
NSTT/MBWT



**Hospital/White Trim**  
NSTT/HBWT



## MADE TO ORDER

Below are a selection of our Made to Order garments.

Should you require it we can work with you to create a bespoke garment that is tailored to your requirements and needs.



**Navy/White Trim**  
NSTT/NWT



**Navy/Red Trim**  
NSTT/NRT



**Red/Navy Trim**  
NSTT/RNT



**Grey/Plain**  
NSTP/G



**Lilac/Plain**  
NSTP/L



**Royal/Plain**  
NSTP/R



**Purple/Plain**  
NSTP/P



**Teal/White Trim**  
NSTT/TWT



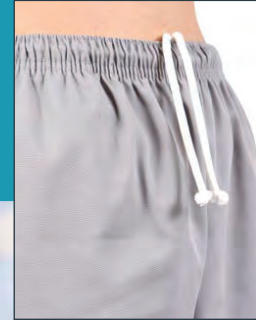
**Navy/Hospital Trim**  
NSTT/NHBT



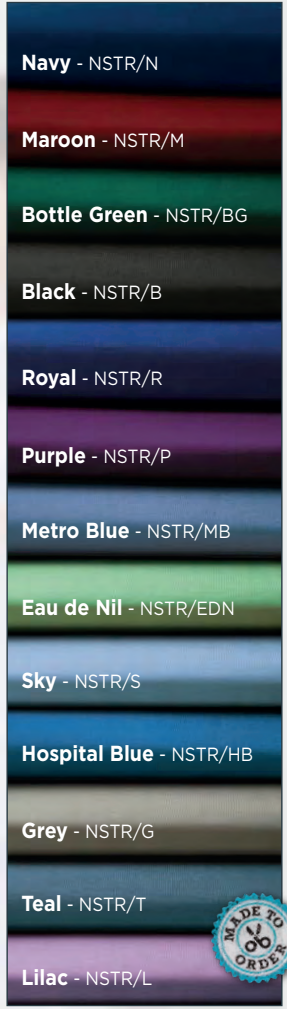


## Unisex Smart Scrub Trousers

Unisex Smart Scrub Trousers, fully elasticated waist with drawstring for added comfort, two side swing pockets. Available in three hemmed lengths.



**Sizes:** XS - 2XL,  
Hemmed length - Petite 29", Regular 31", Tall 33"  
**Material:** 195gsm 65% Polyester 35% Cotton  
Suitable for industrial laundry.  
Infection control compliant.



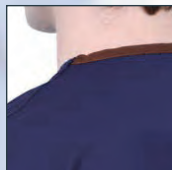
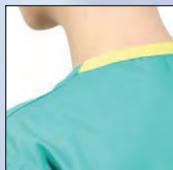


excellence and professionalism...



## Unisex Reversible Scrub Tunic

Unisex Reversible Scrub Tunic, one hip pocket (inside and out), coloured back neckline for size identification and manufactured in a lightweight fabric.



**Sizes:** XS - 3XL, Back length 70-80cm

**Material:** 145gsm 65% Polyester 35% Cotton

Suitable for industrial laundry.

Infection control compliant.

**Ceil**  
NST/CB

**Jade**  
NST/JG



**Navy**  
NST/N





**Navy** - NSB/N

**Ceil** - NSB/CB

**Jade** - NSB/JG



## Unisex Reversible Scrub Trousers

Unisex Reversible Scrub Tunic, adjustable drawstring tie waist, one rear patch pocket, colour coded tie fastening for size identification and manufactured in a lightweight fabric.

Available in a hemmed length.

**Sizes:** XS - 3XL,  
Hemmed length 70-79cm

**Material:** 145gsm 65% Polyester 35% Cotton  
Suitable for industrial laundry.  
Infection control compliant.



# textiles with heritage...



## Unisex Tabard

Unisex Tabard with adjustable side tabs with stud fastening and one large front double pocket.

**Sizes:** XS - 3XL

**Material:** 195gsm 65% Polyester  
35% Cotton

Suitable for industrial laundry.  
Infection control compliant.

**Black**  
NT/B



**Bottle Green** - NT/BG



**Navy** - NT/N



**Royal Blue** - NT/R



**White** - NT/W





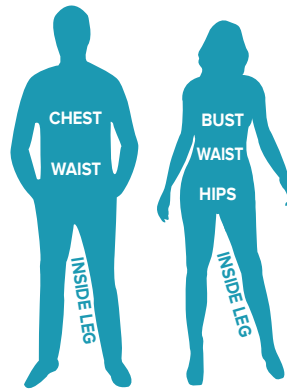


# Sizing & Measuring Guide



A garment that fits correctly ensures freedom of movement and comfort for the wearer.

Please follow our easy guide for a correct fitting uniform...



**Bust/Chest** – Measure over the fullest part, under the arms and straight across the back.

**Waist** – Measure around the natural waistline.

**Hips** – Measure around the fullest part of the lower body.

**Inside leg** – Measure from crotch to the desired trouser length.

## FEMALE SIZE CHART - DRESS, TUNIC & TROUSER

Dress Size	6	8	10	12	14	16	18	20	22	24	26	28	30	32	34
Bust ins.	31	32	34	36	38	40	42	44	46	48	50	52	54	56	58
Bust cm.	79	81.5	86.5	91.5	96.5	101.5	106.5	111.5	116.5	121.5	126.5	131.5	136.5	141.5	146.5
Waist ins.	25	26	28	30	32	34	36	38	40	42	44	46	48	50	52
Waist cm.	63.5	66	71	76	81	86	91	96	101	106	111	116	121	126	132
Hips ins.	34	35	37	39	41	43	45	47	49	51	53	55	57	59	61
Hips cm.	86.5	89	94	99	104	109	114	119	124	129	134	139	144	149	154

**Inside Leg Length** - Petite: 27" / Regular: 29" / Tall: 31" / Extra Tall: 33" / Unhemmed 35"

## MALE SIZE CHART - TUNIC & TROUSER

Chest Size	32	34	36	38	40	42	44	46	48	50	52		
Chest ins.	32	34	36	38	40	42	44	46	48	50	52		
Chest cm.	86	91	97	102	107	109	112	117	122	127	132		
Trouser Size	28	30	32	34	36	38	40	42	44	46	48	50	52
Waist ins.	28	30	32	34	36	38	40	42	44	46	48	50	52
Waist cm.	71.5	76.5	81.5	86.5	91.5	96.5	101.5	106.5	111.5	116.5	121.5	126.5	131.5

**Inside Leg Length** - Short: 29" / Regular: 31" / Tall: 33" / Unhemmed 35"

## UNISEX SMART SCRUB SUIT - TUNIC & TROUSER

Tunic Size	XXS	XS	S	M	L	XL	2XL	3XL
Chest ins.	26	30	34	38	41	46	50	54
Chest cm.	66	76	86	97	107	117	127	137
Trouser Size	XXS	XS	S	M	L	XL	2XL	3XL
Waist ins.	20	24	28	32	36	40	44	48
Waist cm.	51	61	71	81	91	102	112	122

**Inside Leg Length** - Short: 29" / Regular: 31" / Tall: 33"

## UNISEX REVERSIBLE SCRUB SUIT - TUNIC & TROUSER

Tunic Size	XS	S	M	L	XL	2XL	3XL
Chest ins.	30-32	34-36	38-40	42-44	46-48	50-52	54-56
Chest cm.	76-81	86-91	96-102	106-112	116-122	127-132	137-142
Tunic Size	XS	S	M	L	XL	2XL	3XL
Waist ins.	28-30	32-24	36-38	40-42	44-46	48-50	52-54
Waist cm.	71-76	81-76	91-96	101-106	112-116	122-127	132-137

**Inside Leg Length** - Short: 29" / Regular: 31" / Tall: 33"

## Garment/Wash Care Instructions

All uniforms within this catalogue are infection control compliant and can be commercially or domestically laundered. Fabrics are vat dyed and care labels are shown in all garments for guidance.

Please ensure that care labels are followed to maintain the quality and life expectancy of your garment.



Machine Wash  
maximum  
temperature 65°C  
medium agitation



Do not use  
chlorine-based  
bleach



Can be tumble  
dried on a low  
heat setting



Warm iron  
(maximum 150°C)



Suitable  
for dry  
cleaning

## Returns/Refunds Policy

We guarantee your satisfaction and all of our standard stock garments come with a 30 day, no quibble refund option.

Garments should be returned to us carriage paid, providing they have not been worn, used or altered, still within the original packaging and otherwise fit to be returned to stock.

Garments which have been worn, customised or embroidered cannot be returned unless they are defective.

Non-customised garments received may be returned for credit or exchange within 30 days of receipt. Please return garments to the following address and enclose a completed returns form sent with each despatch and notify us that

you have made a return giving your order number.

We will ensure that refunds are raised within five working days upon receiving receipt of return. Please allow up to 10 days for your bank to process the refund.

Defective goods may be returned within 30 days of receipt to be eligible for credit provided they are not soiled or altered. These will be collected FOC within 24/48 hours.

Orders placed inaccurately, may incur a collection fee.

All claims and complaints must be received within 14 days from the date of delivery of the goods.

For any claim or complaint accepted by the Company, we will collect the goods and endeavour to provide a replacement within one week.

If the claim is in relation to late delivery of goods, providing that we have received an order detailing the delivery date required and providing that we have confirmed the delivery date in writing, we will collect the goods and credit the full invoice.



## GET IN TOUCH...

To request a quote or place an order please contact a member of our friendly team via email:

[mail@allprintjersey.co.uk](mailto:mail@allprintjersey.co.uk)

or via Facebook [@allprintjersey](https://www.facebook.com/allprintjersey)



E: [mail@allprintjersey.co.uk](mailto:mail@allprintjersey.co.uk)




Find us on facebook

# reassuringly authentic...



Government of  
**JERSEY**

SupplyJersey 

Registered on Supply Jersey as an official Government of Jersey supplier